



# Working together to promote student wellbeing and safety through Child Link

**Hannah Matus**, A/Project Director  
**Nerida Mason**, Manager, Information Sharing Implementation

Stakeholders, Implementation and Training,  
Victorian Child Information Sharing Division,  
Department of Education





# Acknowledgment of Country

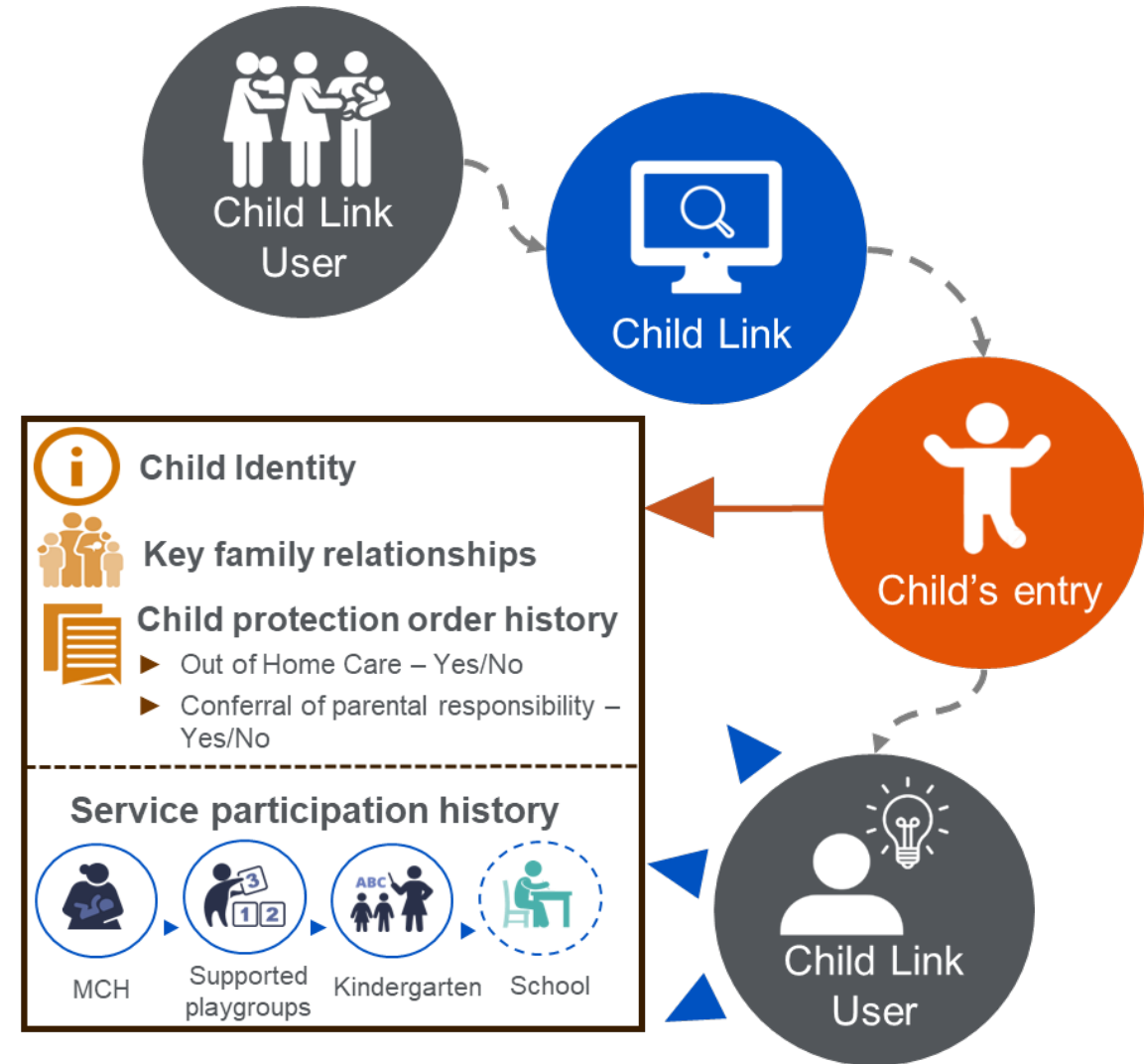


# Learning objectives

- ▶ To understand the intent and purpose of Child Link and how it can support student wellbeing and safety in your school.
- ▶ Through the use of Child Link, enhance positive student transitions, service collaboration and your partnerships with local networks.
- ▶ To consider the next steps to embed Child Link in your school.



# What is Child Link?





# Who can be a Child Link User?

## Education

- ▶ early childhood teachers
- ▶ school principals
- ▶ school teachers and/or student wellbeing professionals
- ▶ roles within DE services and programs, such as Student Support Services and Koorie workforces

## Maternal and Child Health

- ▶ roles within Maternal and Child Health services in councils
- ▶ roles within Aboriginal Maternal and Child Health services and Aboriginal-led Maternal and Child Health services
- ▶ roles within the Maternal Child Health Line
- ▶ roles within community health organisations

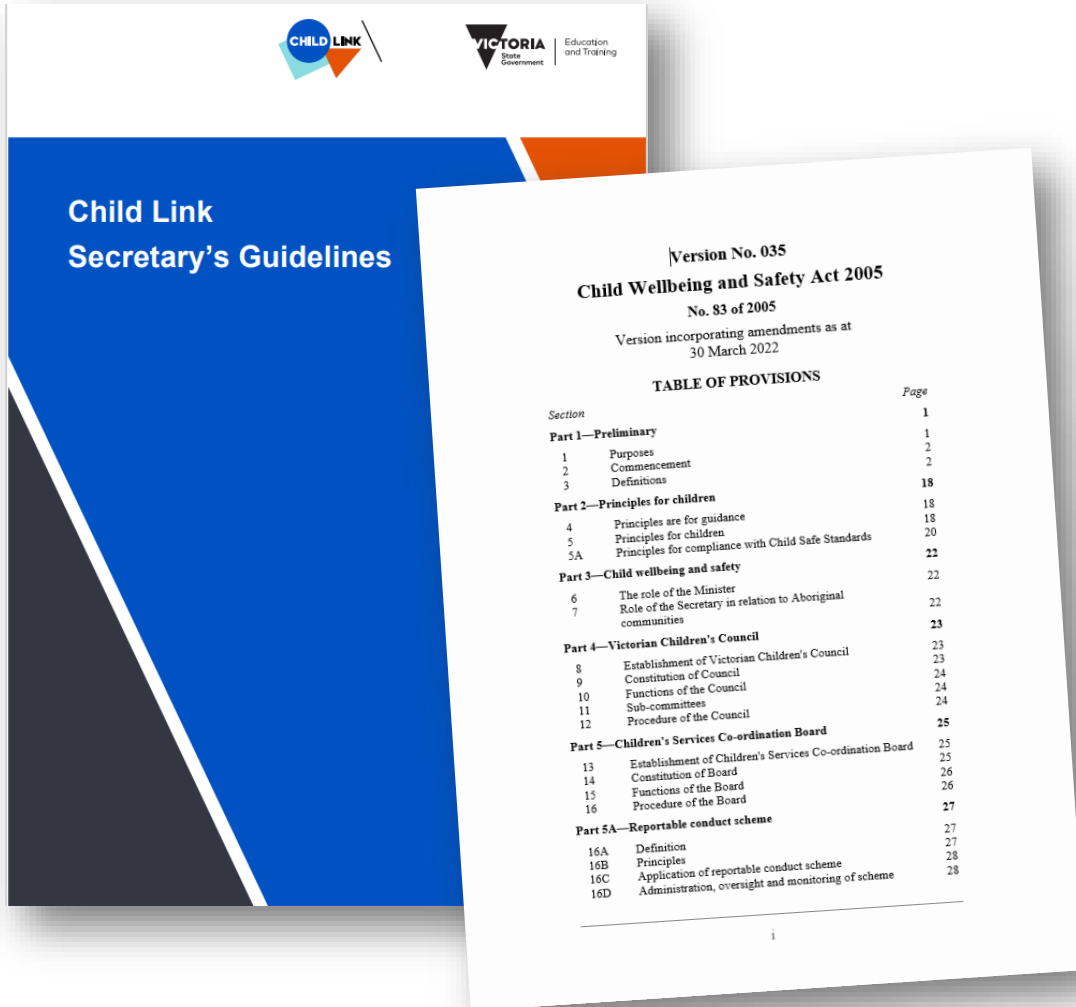
## Child Protection Services

- ▶ roles within Department of Families, Fairness and Housing (DFFH)
- ▶ roles within Aboriginal Children in Aboriginal Care (ACAC) providers
- ▶ roles within community service organisations and Aboriginal Community Controlled Organisations

## Commission for Children and Young People (CCYP)

- ▶ persons employed by the Commission for Children and Young People or otherwise engaged by the Commission

# Who can be a Child Link User in schools?



## Authoriser for schools

- ▶ Only school principals can authorise school staff as Child Link Users

## Child Link Users in schools

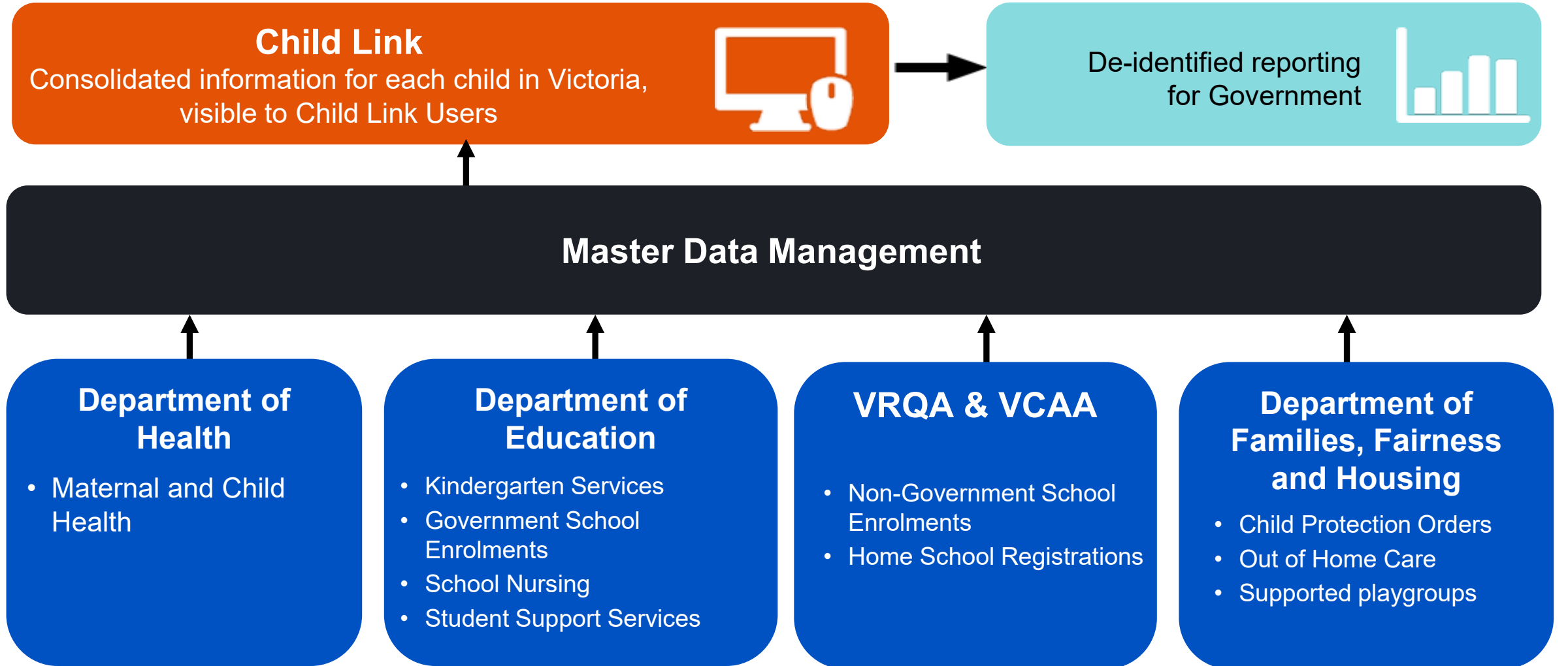
Principals can nominate up to 7 Users, such as:

- ▶ Student wellbeing professionals
- ▶ Registered teachers
- ▶ Education support staff

## Principals as Child Link Users

You can also become a Child Link User as authorised by your region's Principal Employment Co-Ordinator (HR contact)

# Where does the information on Child Link come from?



# How are security and privacy applied?



Child Link has been designed with security and privacy as core principles.



Access, transmission and storage on information for Child Link aligns to strict security protocols.



System usage is recorded and monitored. There are offences and penalties under the Child Wellbeing and Safety Act for unauthorised access, use and disclosure of information from Child Link.



Sharing information for children's safety is permitted under laws, such as the *Child Wellbeing and Safety Act 2005*, *Privacy and Data Protection Act 2014*, the *Health Records Act 2001* and the *Children, Youth and Families Act 2005*.



# Why use Child Link?

- ▶ Improving early identification and enabling earlier support and engagement with relevant services.
- ▶ Supporting a collaborative, coordinated and integrated approach to service delivery across the service sector.
- ▶ Facilitating positive transitions between services by responding to gaps in participation.
- ▶ Empowering professionals to make informed decisions about the needs of the children and families in their care.
- ▶ Promoting a shared responsibility for wellbeing and safety across the sector.





# School experiences



# Recent feedback from other school principals

(Our) wellbeing leader is able to capture the history of a student and get information that can best support us in supporting a student.

The most useful thing about Child Link is being able to access a quick summary of the child's interactions with different services, as this really helps us build a picture of their previous interactions and helps us know where to go for further information.

The most useful thing about Child Link is the knowledge that I get about the child as soon as they are enrolled at our school.

The most useful thing about Child Link is (its) ease of use and visuals are easily read...it builds a detailed picture of a student's history.



# What are the next steps for your school?

Do you have an Authoriser account?

Yes



**Have you nominated staff in your school to become Users?**

Learn more by visiting [Section 4: How do I add Child Link Users?](#) in the Authoriser Induction Guide.

Consider using Child Link and CISS to support positive transitions and plan for new student enrolments.

**Would you like to be a Child Link User?**

Complete [Child Link training](#) and email your Principal Employment Coordinator (HR contact) to request your User access.

Learn more about how Child Link can be used in your school to promote student wellbeing and safety by visiting the [Child Link topic](#) at DE's Policy and Advisory Library.

No



**By the end of Term 3**, contact us at [childlink@education.vic.gov.au](mailto:childlink@education.vic.gov.au) to request your Child Link Authoriser account to be set up and ensure up to 7 nominated Users are trained in your school.

Visit the [Child Link topic](#) at DE's Policy and Advisory Library to learn more about a school principal's role and responsibilities as an Authoriser.

Unsure?



Contact us at [childlink@education.vic.gov.au](mailto:childlink@education.vic.gov.au) to check if you have a current Child Link Authoriser account or if you have any questions.

**Questions?**



Come and visit us at our stall today!

# How can you embed Child Link to support the wellbeing and safety of students in your school?

You can use Child Link to support positive transitions and plan for new students.



You can use Child Link to help gather more information to develop a plan or manage risks for a student.



Information in Child Link can proactively be shared with other school staff and with prescribed organisations



You can ensure any new staff in appropriate roles are trained and added in Child Link (e.g. in your wellbeing teams)





# Resources

## Child Link topic on DE's Policy and Advisory Library


### School operations

# Child Link

Policy

Guidance

Resources

 Print whole topic

All Victorian government schools are progressively gaining access to Child Link through a phased, area-based approach through to July 2024.

School principals will be contacted when it is time for their school to start using Child Link. Schools can opt-in early by contacting the Child Link team (phone 1800 549 646 or email [childlink@education.vic.gov.au](mailto:childlink@education.vic.gov.au)).

Only those schools using CASES21 for student enrolments will be able to access Child Link in the school User category, as the individual student information (on each child entry) that is accessible to a school on Child Link is based on the school's enrolment data on CASES21.

Specialism schools that have different enrolment or attendance processes (such as hospital schools and outdoor education schools) can contact Child Link for a further discussion about eligibility for access to Child Link.

### Policy last updated

12 February 2024

### Scope

- Schools

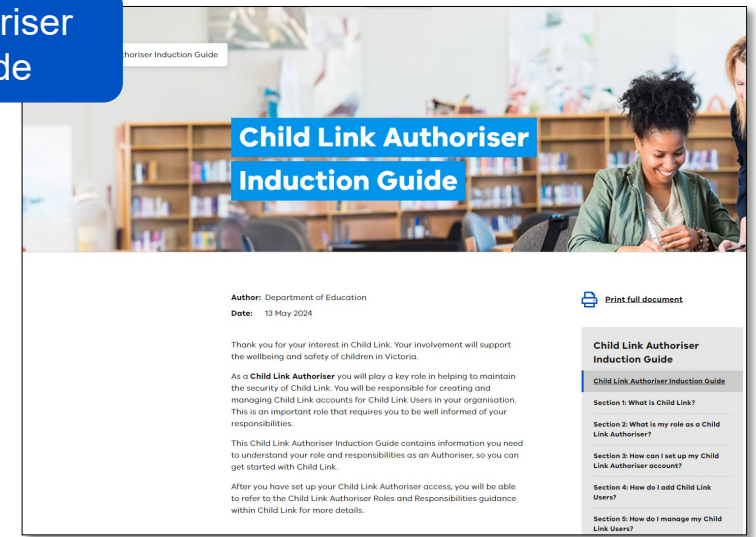
### Contact

Whole of Victorian Government Information Sharing and MARAM Enquiry Line  
Victorian Child Information Sharing Division

1800 549 646

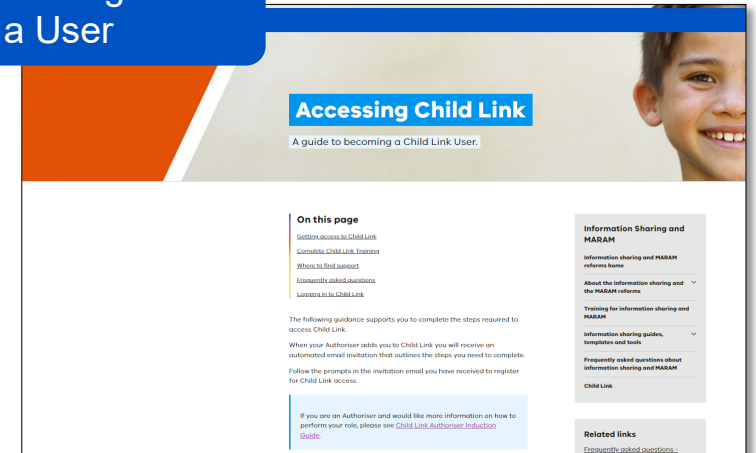
[childlink@education.vic.gov.au](mailto:childlink@education.vic.gov.au)


## Child Link Authoriser Induction Guide



 <https://www.vic.gov.au/child-link-authoriser-induction-guide>

## Accessing Child Link: A guide to becoming a User



 <https://www.vic.gov.au/child-link-resources>

 <https://www2.education.vic.gov.au/pal/child-link/policy>

# Further information and support



**Enquiry Line:** 1800 549 646 (Monday – Friday, 9.00am – 5.00pm)



- ▶ [Child Link Website](#) – Public site
- ▶ [Accessing Child Link](#)
- ▶ [Child Link – Policy and Advisory Library](#) (for government schools)
- ▶ [Information Sharing Schemes - Policy and Advisory Library](#)



**Email:** [childlink@education.vic.gov.au](mailto:childlink@education.vic.gov.au)



**Child Link User log in:** <https://ChildLink.vic.gov.au>

# Thank you