

# How the South was One



# Learning Intention



A workshop to share top tips and experiences of how the Central Highlands South Network has worked to support Principals, refine our focus and develop a culture of sharing and collaboration.

What we hope to share:

- Context of our Network
- How we have developed a collective vision for the work we do.
- Our Network Architecture.
- Provide time to reflect on your own Network practices.

# Reflection on your own practice as a network



Keep	Stop	Start

# Our Context

28 schools

- 24 primary
- 2 primary/secondary
- 2 secondary

42% of schools with <100 enrolments

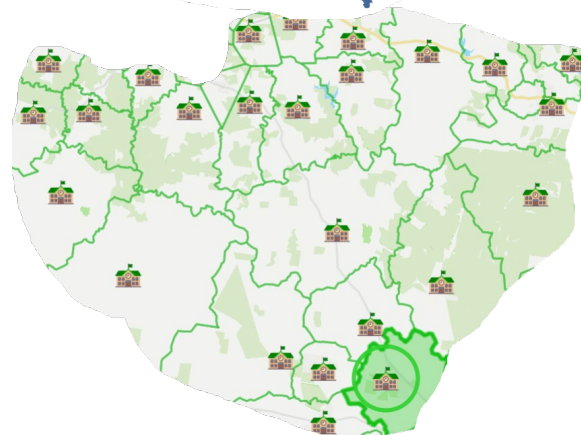
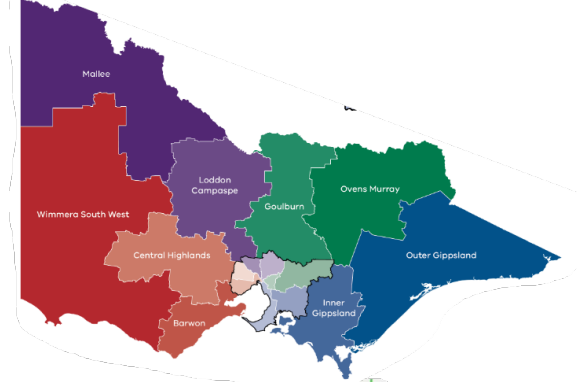
25% of schools with 100-250 enrolments

7% of schools with 251-500 enrolments

14% of schools with 501-1000 enrolments

10% of schools with >1000 enrolments.

SFOE range is: 0.2096 to 0.5631



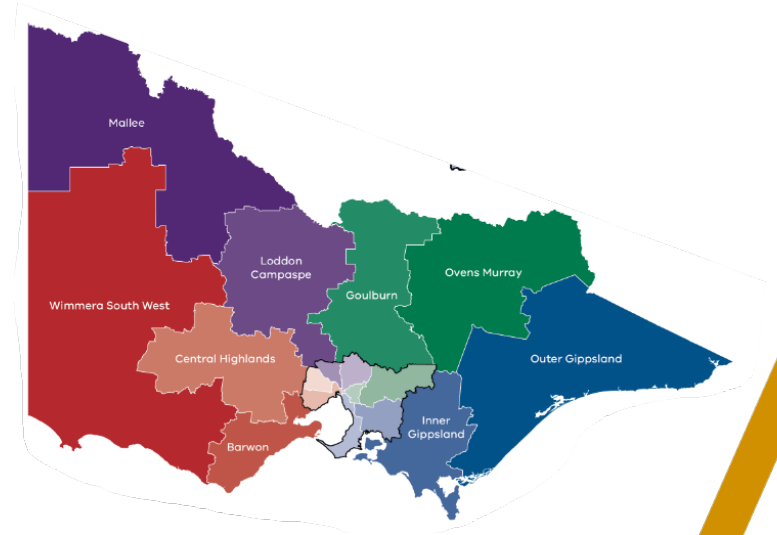
Schools Performance Group - Number of Schools in each group, 2023





# Discussion

What are the issues or challenges that your Network face that are unique/specific to your context?





# How we have developed a collective vision for what we do?

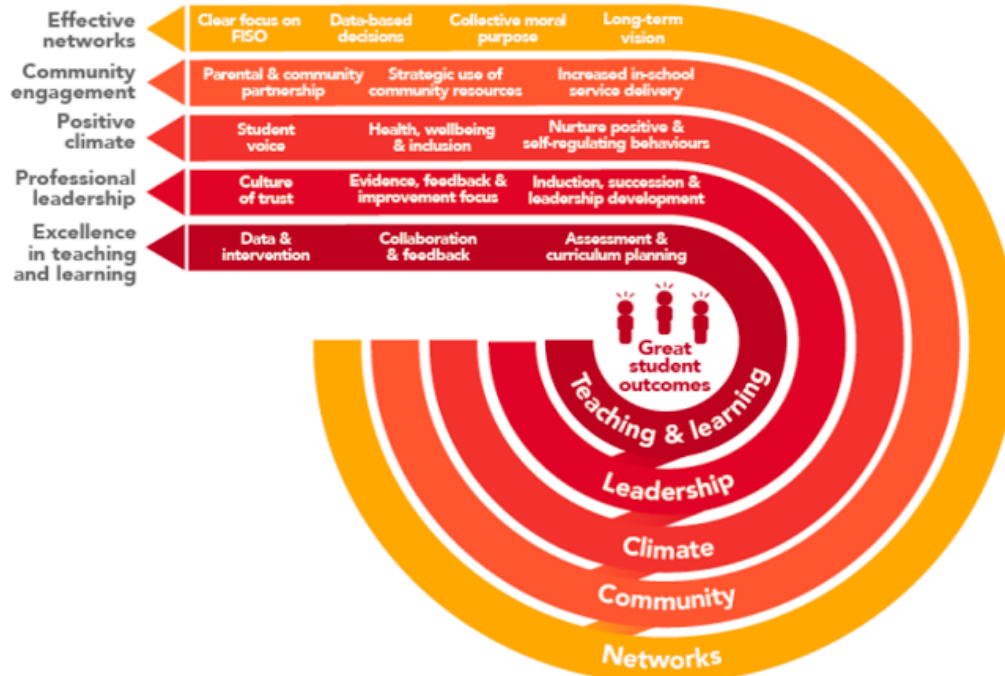


**What is our purpose as a network?**



# Our vision - the how?

Great networks harness the power of great school practice to achieve great outcomes for all students.







## YOUR 2024 EXECUTIVE TEAM

## EXECUTIVE WEBSITE

SAM IRWIN    BERNIE CONLAN    CATHERINE BARNES    CHELSEY MARKS    GEORGE PORTER    SIOBHAN GOSNEY    ALANA JONES

2024 **CHEAT SHEET**

# SOUTH CENTRAL HIGHLANDS

## OUR VISION

Central Highlands South Network value our role as leaders in the Victorian education system. Using the Framework for Student Outcomes (FISO 2.0), we focus on collective efficacy by utilising the experience and expertise of our members. As a network we aim to support each other and provide a professional environment through, collegiate conversations and shared experiences in learning and wellbeing.

## OUR GOALS

AS A NETWORK OF SCHOOLS WE ARE AIMING TO IMPROVE NUMERACY OUTCOMES ACROSS ALL SCHOOLS TO IMPROVE THE CONNECTEDNESS OF ALL OF OUR STUDENTS

### TERM 1

21ST FEBRUARY  
SWPBS FOCUSED  
SCHOOL VISIT  
ST ALBANS HEIGHTS PS

THURSDAY 29TH FEBRUARY  
REGIONAL PRIN FORUM

27TH MARCH  
NETWORK MEETING  
9:00AM - 12:30PM  
BUNGAREE FNC

### TERM 2

24TH APRIL  
NETWORK MEETING  
9:00AM - 12:30PM  
BUNGAREE FNC

19TH JUNE  
END OF SEMESTER WRAP-UP  
1:00PM - 4:00PM  
VENUE TBC

### TERM 3

24TH JULY  
NETWORK MEETING  
9:30AM - 11:00PM  
WEBEX

MONDAY 29TH JULY  
PRINCIPAL CONFERENCE

11TH SEPTEMBER  
NETWORK MEETING  
9:00AM - 12:30PM,  
BUNGAREE FNC

### TERM 4

16TH OCTOBER  
NETWORK MEETING  
9:00AM - 12:30PM  
BUNAGREE FNC

WEDNESDAY 13TH NOVEMBER  
REGIONAL PRIN FORUM

27TH NOVEMBER  
END OF YEAR WRAP-UP  
1:00 - 4:00PM  
TBC



NETWORK MEETING FOCUS - CONNECTION/LEARNING/WELLBEING/GET STUFF DONE




# Our vision - the how?

## Theory of change – Communities of Practice

If we work collaboratively with a common purpose across schools or other educational settings, learning with and from each other

**and** take collective responsibility for all learners using a continuous cycle of inquiry to implement evidence-based interventions

**then** we will be well-positioned to improve learner outcomes and reduce the variability of performance within and between schools and other educational settings.






# Our vision - the how?

## 10 Principles of effective professional learning communities

Found in all effective professional learning communities are 10 principles that bring together the best available research on school improvement:

1. Student learning focus – school improvement starts with an unwavering focus on student learning
  2. Collective responsibility – for every child to achieve, every adult must take responsibility for their learning
  3. Instructional leadership – effective school leaders focus on teaching and learning
  4. Collective efficacy – teachers make better instructional decisions together
  5. Adult learning – teachers learn best with others, on the job
  6. Privileged time – effective schools provide time and forums for teacher conversations about student learning
  7. Continuous improvement – effective teams improve through recurring cycles of diagnosing student learning needs, and planning, implementing and evaluating teaching responses to them
  8. Evidence driven – effective professional learning and practice are evidence-based and data-driven
  9. System focus – the most effective school leaders contribute to the success of other schools
  10. Integrated regional support – schools in improving systems are supported by teams of experts who know the communities they work in
- 

**How does your network facilitate  
collaboration between schools and  
Principals?**



# Our network architecture

## What worked for us?



# Modular components



**Simple + Modular + Repeatable**



# Three focus areas

## Connection + Learning + Wellbeing







Network days

Getting stuff done

Pop up PD



## Network Learning Rythm

Week	1	2	3	4	5	6	7	8	9	10	11
<b>Term 1</b>				St Albans Heights Network Launch Wednesday 21st Feb	Prin Forum (29th Feb)		(NAPLAN) Labour Day, Moorabool Cluster Curric Day	(NAPLAN)	Wednesday 27th March Network Meeting		
<b>Term 2</b>		Wednesday April 24th Network Meeting			Deadly Aspirations Day					Wednesday 19th June Network Wrap-Up	
<b>Term 3</b>		Wednesday 24th of July Network Meeting	Principal Conference		Prin Forum 14th August				Wednesday 11th September Network Meeting		
<b>Term 4</b>		Wednesday 16th of October Network Meeting				Wednesday 13th of November - Prin Forum		Wednesday 27th November Network Celebration			



# Planning tools

Executive meets straight after network meeting

Feedback and reflection



# Planning tool

## 2024 Network Strategic Directions

### What are our 3 key focus areas as a network?

#### 1. Connection

- To build relational trust and support collective accountability
- Introduce the VATL Leadership capabilities
- Setting the scene for 2024 (Reflection on David Howes' presentation)

#### 2. Learning - Numeracy

- Continue with the work that has been done to establish and ensure sustained practice excellence
- Utilising Collaborative Complex Problem Solving Framework to explore problems and our numeracy practice with greater precision

#### 3. Wellbeing - Sense of Connectedness

- Strong lens on wellbeing in schools as important as ever.
- Success over past few years no coincidence.
- Continued push on routines - calm and orderly
- Utilising coaching as we need shared expert advice

### What can we uniquely do as a network? What can we do best?

- SWPBS Coaching

### How would we like to develop in our ways of working together?

- CoPs
- Refining problem solving with - Collaborative Complex Problem Solving - working with more precision

### What design features matter to us for 2024?

We want more of precision, greater buy in to collective accountability 'our kids'

We want less looking at the data and more acting on the data

We see an opportunity for collective efficacy through open sharing of the right work by the right people

Mindful of time - we have limited time together - work to be at 'Principal level'.

## Term 1 Week 9 - Network Meeting 27th of March

Time - 9.00am - 12.30pm

### Session DESIGN

#### *Pre-work to be completed before the session*

*What would we like people to watch, listen to, discuss, or complete before the session that could enhance the quality of our learning and discussion?*

•

### Learning Design

Session	Key outcomes	Session type/ Tools/Format	Responsibilities
<b>Connection</b> 9:00am - 9:45am	<ul style="list-style-type: none"> <li>• Acknowledgement of Country</li> <li>• Buninyong Scotsburn Campus</li> <li>• Connection</li> <li>• Principal Wellbeing roundtable</li> <li>• Why do we meet?</li> <li>• Check in - catchup</li> </ul>		
<b>Working Session 1</b> 9:45am - 10:45am <i>Learning</i>	<ul style="list-style-type: none"> <li>• Schools review students 'on the cusp' and teaching strategies used to support them</li> <li>• Numeracy Summit - share back</li> </ul>	Presentations	Cath, Chelsey & Alana
<b>Break</b> <i>Add structure/process to support building connections</i>			
<b>Working Session 2</b> 11:00am - 12:00pm <i>Wellbeing</i>	<b>School connectedness focus</b> <ul style="list-style-type: none"> <li>o Our network data for school connectedness (5 mins)</li> <li>o Data discussion (5 mins)</li> <li>o Student Check in Tool (5 mins)</li> <li>o What have you been doing in your school discussion - Suitcase activity (20 mins)</li> <li>o Table sharing (5 mins)</li> <li>o Planning time- Traffic light activity (20mins)</li> <li>o Table sharing (5mins)</li> </ul>	Connectedness data: <a href="#">South Network Sense of Connectedness pptx - Google Slides</a>	Bernie, George, Siobhan & Karen
<b>Technical</b> 12:00am - 12:30pm	<ul style="list-style-type: none"> <li>• <i>Time in Lieu</i> <ul style="list-style-type: none"> <li>o What is working?</li> <li>o What is challenging?</li> </ul> </li> <li>• <i>Bring something to share</i></li> <li>• <i>SEIL Update/Hot Topics</i></li> </ul>	<a href="https://docs.google.com/presentation/d/14GzBsn3XWIEE9tX4v-0Cq2Vhewy17Zrd44mZodwiedf7vsp-shans">https://docs.google.com/presentation/d/14GzBsn3XWIEE9tX4v-0Cq2Vhewy17Zrd44mZodwiedf7vsp-shans</a>	Corey & Sam  Karen
<b>Lunch</b> <i>Add structure/process to support building connections</i>			
<b>Optional - Get Stuff Done</b>	Option to get some collegiate support with: School council meetings Annual Report development/submission		

# Reflection on your own practice as a network



Keep	Stop	Start

## Contact Details

[george.porter@education.vic.gov.au](mailto:george.porter@education.vic.gov.au)

[samuel.irwin@education.vic.gov.au](mailto:samuel.irwin@education.vic.gov.au)

[chelsey.marks@education.vic.gov.au](mailto:chelsey.marks@education.vic.gov.au)